



IMPORTANT

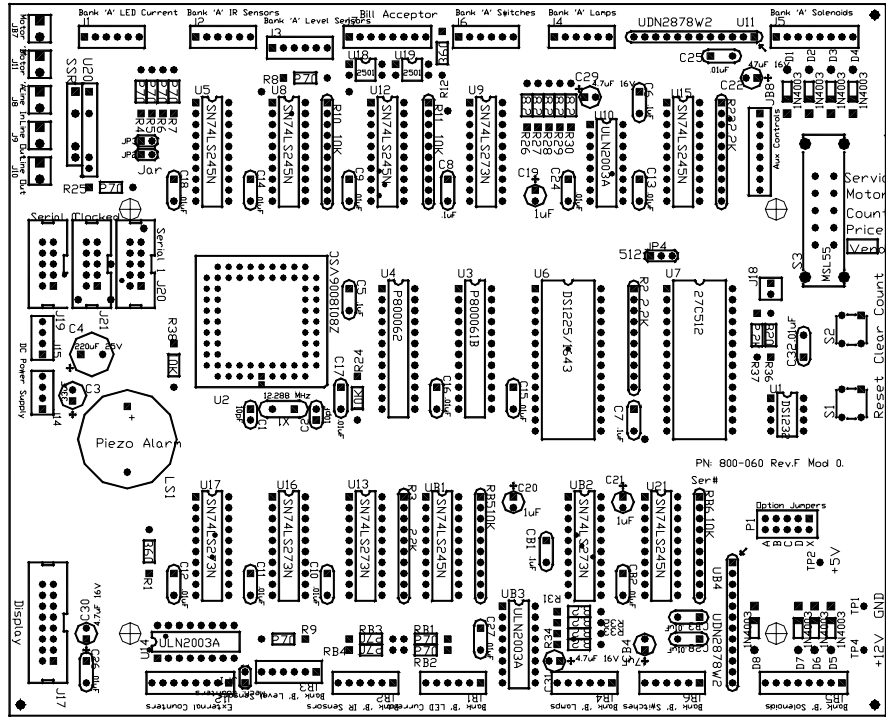
PLEASE READ BEFORE ATTEMPTING TO CHANGE CONTROL BOARD

Instructions for Advanced Replacement Revision F Control boards for Technik Mfg. Vending Machines

1. Unplug the machine from wall receptacle to prevent accidental electrical shock.
2. Locate the control board in the machine.

Note Depending on the machine model, the inner mechanism or other item(s) may need to be removed to allow better access to the control board.
3. Carefully pull one of the connectors off the control board and mark a symbol or number on it using wire labels or masking tape and a pen. Mark the corresponding connector on the control board layout that follows these instructions with the same symbol or number you put on the harness connector.
4. Repeat Step 3 with every connector until all of the connectors have been removed from the control board.
5. Using needle nose pliers or a board puller, remove the control board from the 4 plastic standoffs by squeezing the protruding ends together.
6. Install the new or reconditioned control board into the machine.
7. Using the control board layout as a reference, plug each labeled connector into its corresponding place on the control board.
8. Plug the machine into wall receptacle and turn it on.
9. Most of our control boards are set for machines with 4 columns. If you have a machine with 2 or 8 columns your machine may need to be re-initialized. To do this, put your machine in "Price" mode. Hold down the "Clear Count" or "Next" button and turn the machine off for at least 2 seconds. Turn the machine back on and let go of the "Clear Count" or "Next" button when the machine starts beeping.
10. Now the machine will have to be re-priced. Check the user's manual that came with your machine to learn how to set the prices.

Control Board Layout



For telephone support you may contact us at 1 (800) 795-8251 between the hours of 8:00 a.m. and 7:00 p.m. CST Monday through Friday, and 9:00 a.m. to 3:00 p.m. CST on Saturdays.